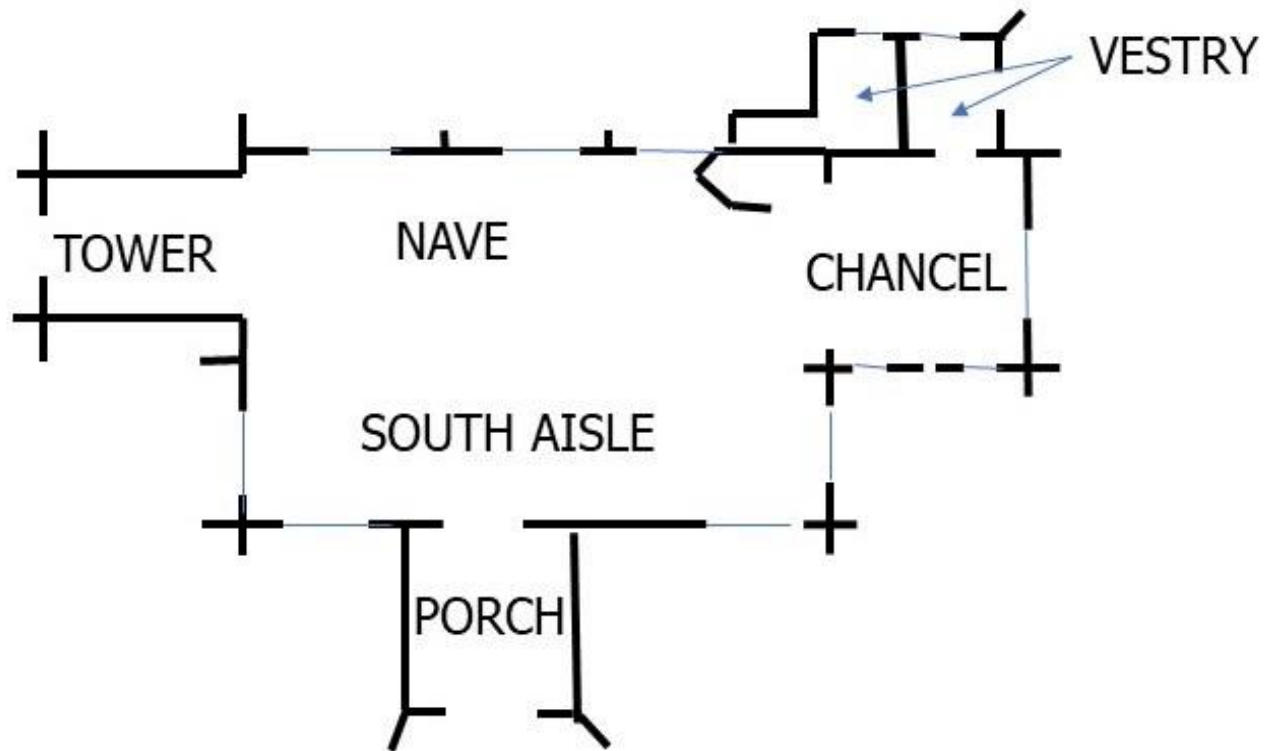


**YCCART 2019/Y21**  
**Kingston Seymour church**  
**Part 2 – Inside the church**  
**YATTON, CONGRESBURY, CLAVERHAM AND CLEEVE ARCHAEOLOGICAL**  
**RESEARCH TEAM (YCCART)**  
***General Editor: Vince Russett***



*May 2019*

## Inside the church



*Plan – not to scale.*



Please enter the church by the south porch

## South porch

The south porch dates to the period 1450-75.



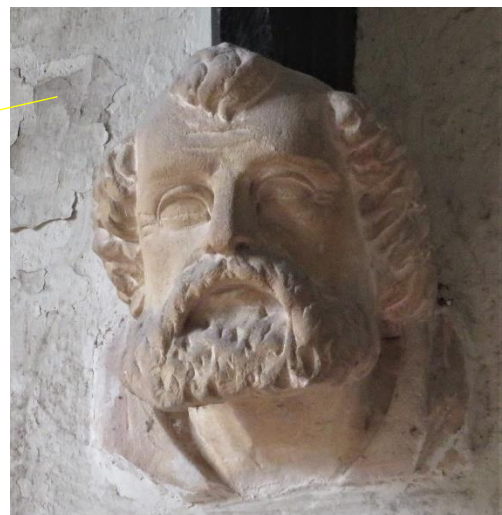
To the right of the door is an ogee headed stoup where holy water was kept for people to cross themselves before entering the building. The floor was raised during the 19th century so the stoup is now lower than intended.



*The 15<sup>th</sup> c stoup.*

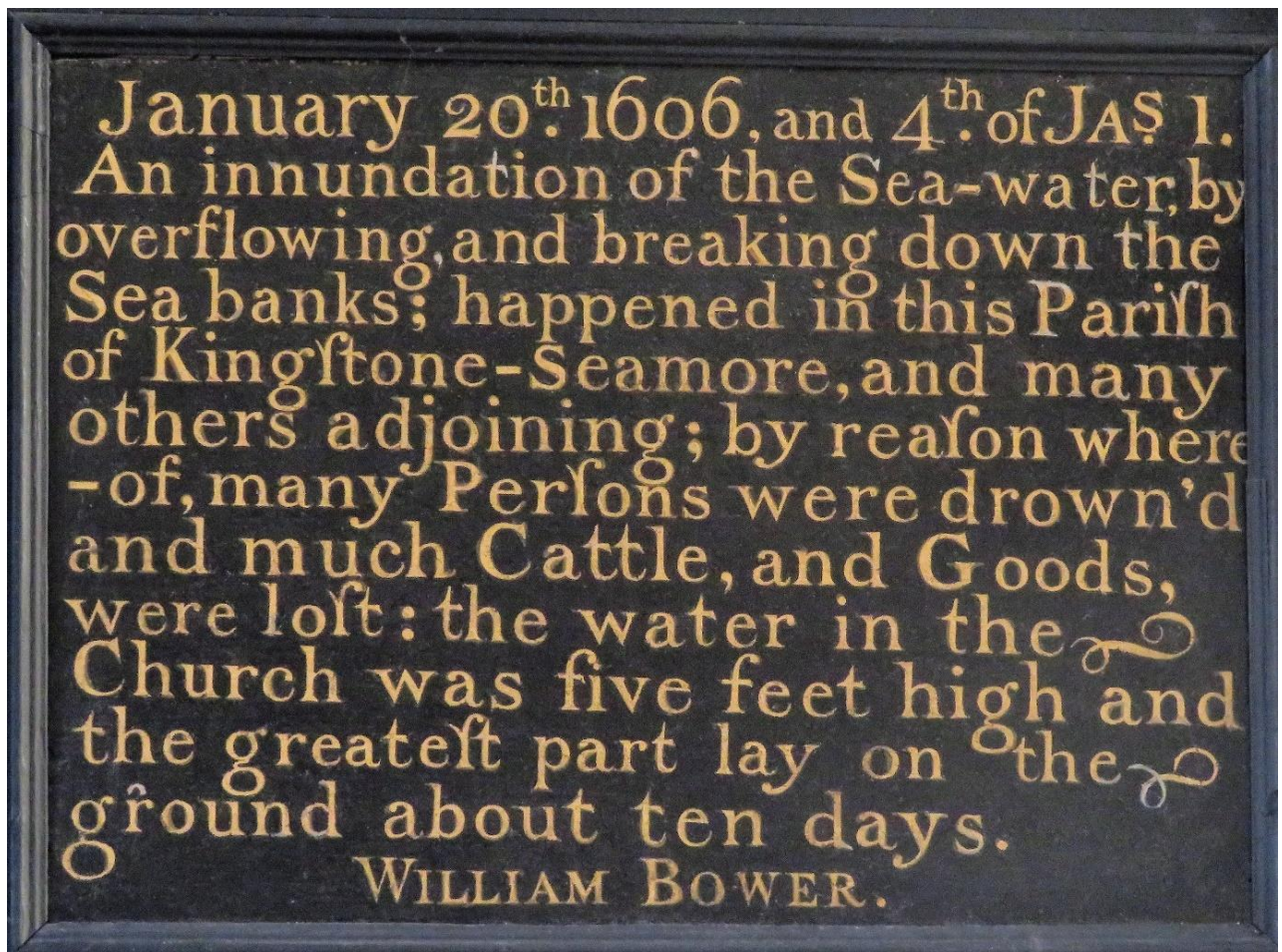


Before the Reformation this niche, above the inner doorway, contained a statue.



The two heads in the porch appear to date to the 19<sup>th</sup> century.

On the left wall as you enter is a plaque describing the 1606 flood, which is said to have filled the church with 1.5 m of water.

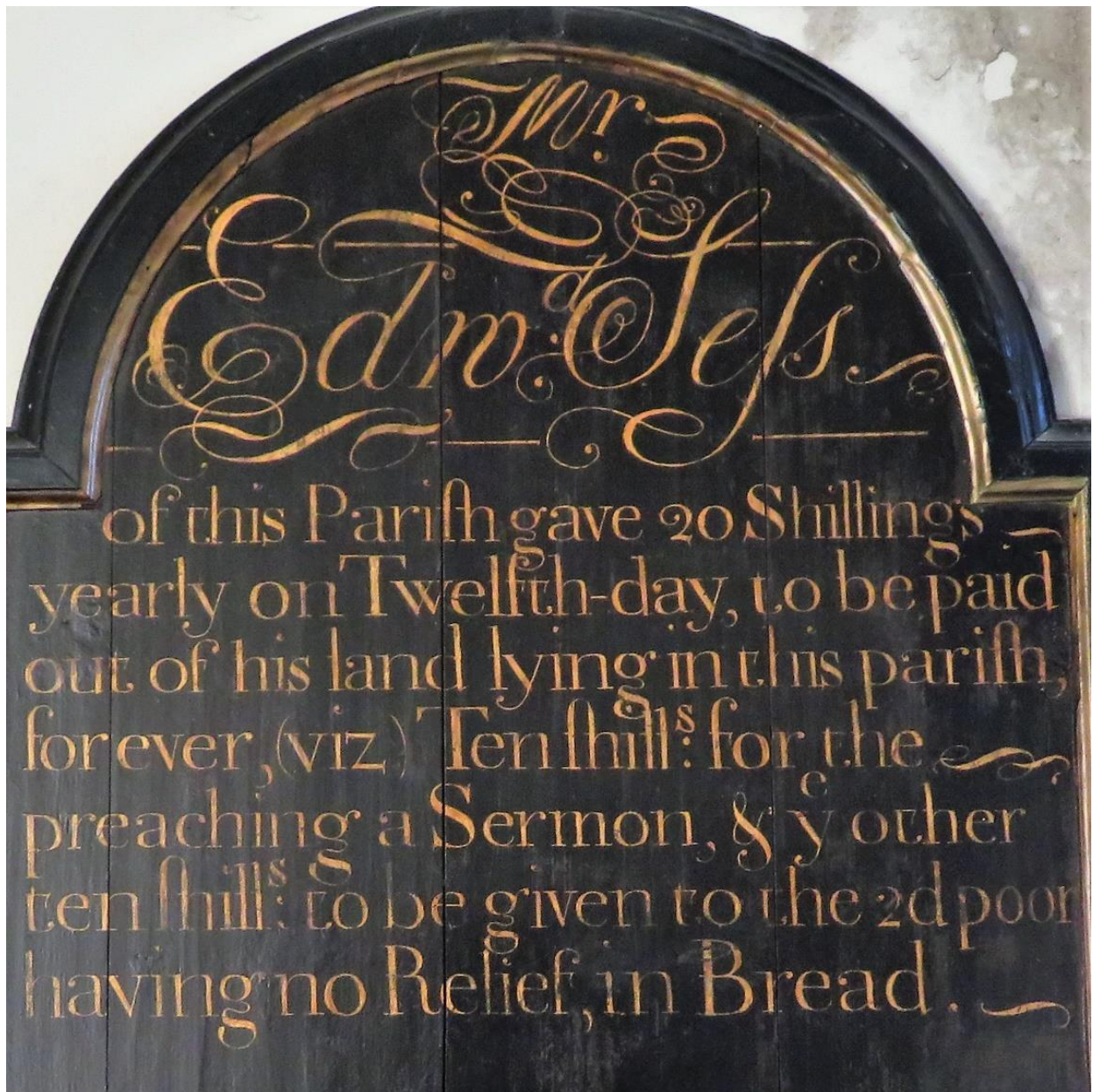


It reads:

" January 20<sup>th</sup> 1606 and 4<sup>th</sup> of JAs 1, An inundation of the sea water by overflowing and breaking down the Sea banks; happened in this Parish of Kingstone-Seamore, and many others adjoining; by reason whereof many Persons were drown'd and much Cattle and Goods, were lost: the water in the Church was five feet high and the greatest part lay on the ground about ten days.

WILLIAM BOWER"

A third board gives details of a charity set up by Edward Sess, churchwarden here in 1718.



It reads:

Mr Edw Sess of this Parish gave 20 Shillings yearly on Twelfth day, to be paid out of his land lying in this parish forever, (viz) Ten shill for the preaching a Sermon & ye other ten shill to be given to the 2<sup>nd</sup> poor having no Relief in Bread.



Another board gives details of a lawsuit between this church and St Mary's, Yatton and a second flood in 1702 as follows:

A memorandum of a law suit happening in the year 1702, occasioned by the assessors of Yatton taxing certain lands lying in this parishes of Kingftone-Seamore, called Colefree Land; The occupiers of which refusing to pay their rates, the other took distress upon the said lands, for this parish brought an action against them the 15<sup>th</sup> and 16<sup>th</sup> of March 1701. This cause was tried at Taunton, before Baron Price, when this parish obtained a verdict against the parish of Yatton, and afterwards got great costs of suit. Also, Nov. 27 ensuing, the inhabitants sustained great loss of cattle, sheep, and corn, with many mows both of corn and hay, the violent tempest breaking down the sea-banks, let in the salt water.

## South Aisle

The south aisle dates to the period 1450-75. and formed a manorial chapel or lady chapel. In 2000 it was re-consecrated as a lady chapel. The four-bay south aisle arcade of the four-hollows type, is c15 the century.



On entering the church on the left is the font. Pevsner describes it as a circa 12<sup>th</sup> century base with bowl of cushion capital form and adds that the bowl looks to be an addition. The font is in sections. Was it sawn up at one point?





The west wall of the south aisle has this charming plaque.

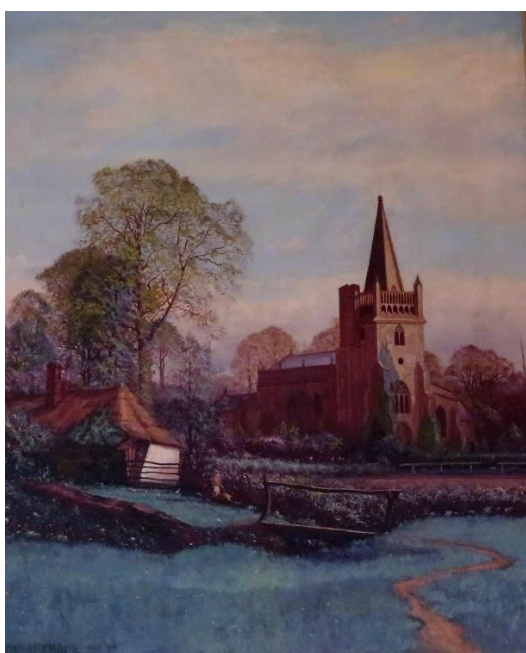


Over the entrance door on the south wall is a picture of the transfiguration of Jesus, the work of Robert Smirke (1752 to 1845). It was presented by J H Smyth – Piggot (then lord of the manor) and was from 1826 to 1865 the altar piece.



Below and to the left of the painting is a plaque to Sydney John Hale, Private 2<sup>nd</sup> Battalion Grenadier Guards, who died in the South African war at Leribe on October 19<sup>th</sup> 1900 aged 28. The Western Daily Press for 5 Oct 1908 reported.

"There was a large attendance at the church on Sunday afternoon, at the unveiling tablet to the memory of Sydney John Hale of the Grenadier Guards, who lost his life in Africa. Special hymns were sung at the service, at which the Rev Preb. H. Vaughan, R.D., gave an address. Colonel W. Long, C.M.G., unveiled the tablet, which is in the form of a marble shield, set in Mangotsfield red stone, with the crest of the Grenadier Guards in alabaster. The 2<sup>nd</sup> Wessex Royal Engineers (Clevedon and Weston), under Captain J.F. Keen, Captain Fry, Lieutenants Lockett and Butterill, were present. Headed by their brass and fife and drum bands, they afterwards marched back to the railway, and were entertained to tea at the coffee house by Mrs Livingstone Ogilvy, the lady who had the memorial erected.



To the left of the plaque is this picture donated by John Griffin of Kenn some 30 years ago. Artist unknown.



To the right of the entrance door is a small table and beside it a 10 - gallon milk churn. These would be left by dairy farmers by the roadside on purpose-built platforms, or stands, at the right height to be loaded on to the dairy's cart or lorry.

The small table has the following plaques

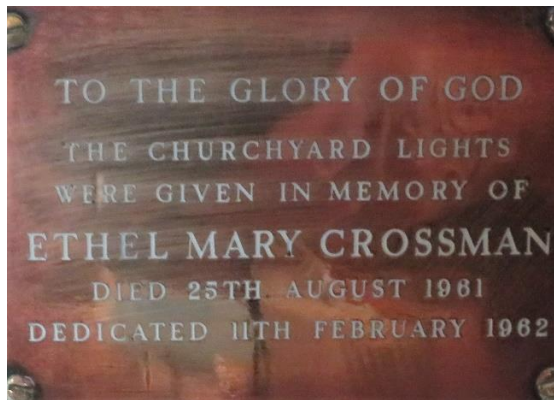


REMEMBER BEFORE GOD  
WILLIAM SCRIBBINS  
BORN 1858 – DIED 1945  
CAPTAIN OF THE BELLRINGERS 1923 - 1945  
SEXTON 1885 -1927  
CHORISTER 1885-1943



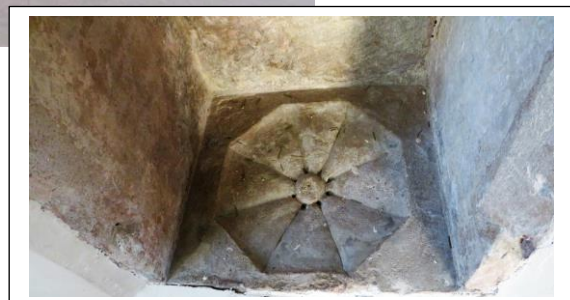
REMEMBER BEFORE GOD  
CHARLES GEORGE SCRIBBINS  
1888- 1971  
REGULAR WORSHIPPER IN THIS CHURCH  
AND A MEMBER OF THE P.C.C.  
FOR OVER 20 YEARS

On the left of the porch door attached to the wall is this plaque.



TO THE GLORY OF GOD  
THE CHURCHYARD LIGHTS  
WERE GIVEN IN MEMORY OF  
ETHEL MARY CROSSMAN  
DIED 25<sup>TH</sup> AUGUST 1961  
DEDICATED 11<sup>TH</sup> FEBRUARY  
1962

Further east is an ogee headed piscina with a shelf (see below) which Pevsner dates as c15th century





The stained glass window on the east wall is in remembrance of Minnie S England who died on April 7<sup>th</sup> 1949.



On the east wall is a hymnal with an inscription  
REMEMBER A V FORD  
WARDEN 1936 -45



The ceiling was painted blue  
during the 1980s restoration.



Corbels below the ceiling. Left is east.



A larger view of the heads by the east window.



Before you leave the south aisle note that the 15th century Arcade leans somewhat.



Also see the small foliate capitals to the shafts on the c 15<sup>th</sup> century four-bay south aisle arcade.

## The Nave and Tower



The west end of the nave with the organ on the right hand side. Beyond is the bell tower with its 15<sup>th</sup> century window.



The clock and plaque in the tower. The inscription reads:  
PRESENTED BY MRS K. BAILEY  
IN MEMORY OF I.K. BAILEY  
CHURCHWARDEN 1971-1976  
REGULAR WORSHIPPER AND  
GOOD FRIEND TO THE RINGERS  
FOR MANY YEARS



This window was erected  
 by the Smyth-Pigott family  
 in memory of their Father  
 JOHN HUGH SMYTH-PIGOTT  
 of Brockley Hall Somerset  
 who died in 1824. It was re-  
 newed by that family in 1917.

The Smyth Pigott memorial window in the tower was restored in 1917 to designs by Roland Paul.



The northern doorway contains the plaque below.



Also in the tower can be seen the royal arms of Charles 1<sup>st</sup>.

## The bells



The frame pictured above records the following:

Church of All Saints

Kingston Seymour

The Bells IN THIS 14<sup>th</sup>/15<sup>th</sup> CENTURY TOWER

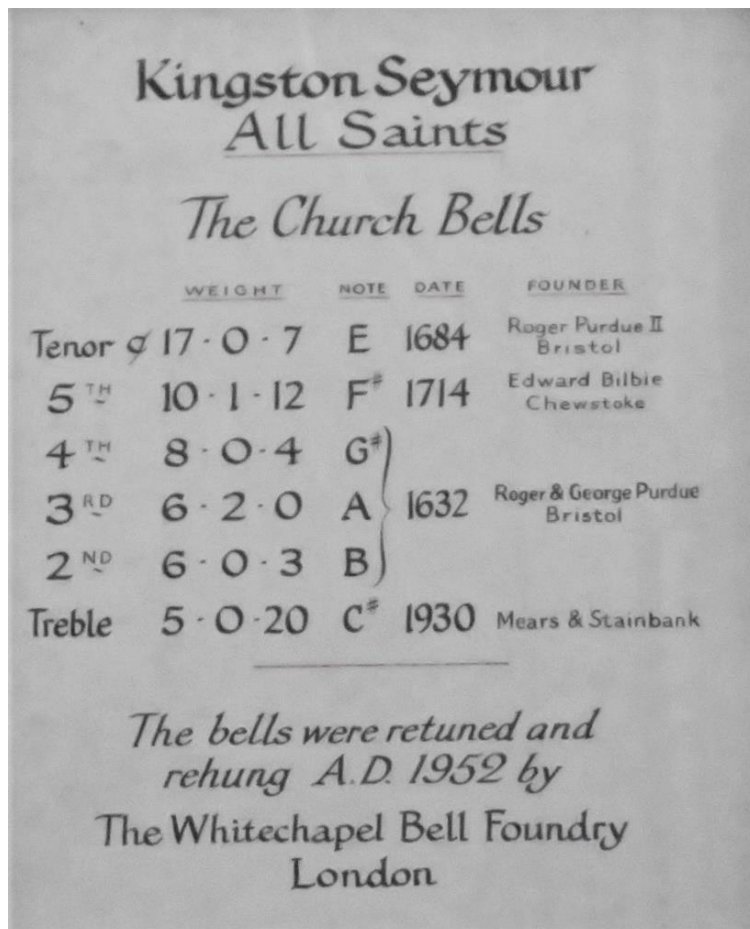
THEN ONLY FIVE WERE REHUNG IN A STEEL FRAME IN  
1908 BY MESSRS LLEWELLING AND JAMES OF CASTLE GREEN  
BRISTOL AT A COST OF £175. A NEW CHIMING APPARATUS  
WAS ALSO THEN INSTALLED.

THE PRESENT TREBLE COSTING £88 14S (SEE BRONZE TABLET)  
WAS CAST AND ADDED IN OCTOBER 1930 BY MESSRS  
MEARS AND STAINBANK OF WHITECHAPEL LONDON THUS  
COMPLETING THE PEAL OF SIX DESCRIBED BELOW

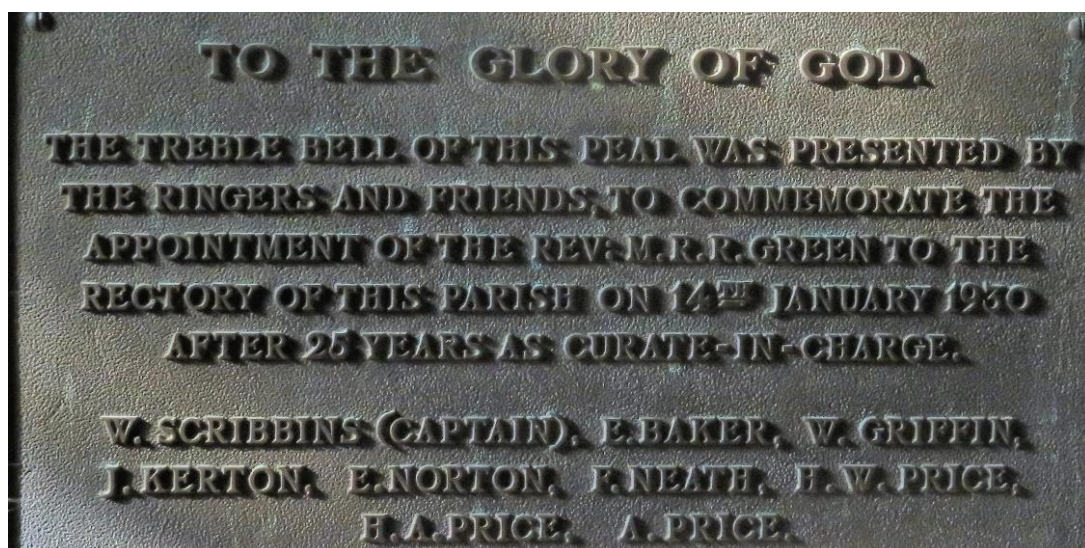
NO	NOTE	DIAM'T'R	INSCRIPTION	FOUNDER(S)
1 (TREBLE )	C SHARP	2' 6"	"M R R GREEN, RECTOR H W PRICE, EDWARD GRIFFIN WARDENS 1930	MEARS AND STAINBANK LONDON
2	B	2' 8"	"ANNO DOMINI 1632"	ROGER AND GEORGE PURDUE OF BRISTOL
3	A	2' 10 1/2"	"ANNO DOMINI 1632"	ROGER AND GEORGE PURDUE OF BRISTOL
4	G SHARP	3'	"ANNO DOMINI 1632"	ROGER AND GEORGE PURDUE OF BRISTOL
5	F SHARP	3' 5"	"BILBIE CAST ME 1714"	EDWARD BILBIE OF CHEW STOKE (RECAST)
6 (TENOR)	E	3' 11"	JAMES HAYMAN WILLIAM RAINEY CHURCHWARDENS 1684 R P"	ROGER PURDUE 11 OF BRISTOL

THE WEIGHTS RANGE FROM TREBLE 5 ¼ CWTs TO TENOR 15CWTs (APPROX).

Another plaque provides an update after the bells were retuned and rehung in 1952



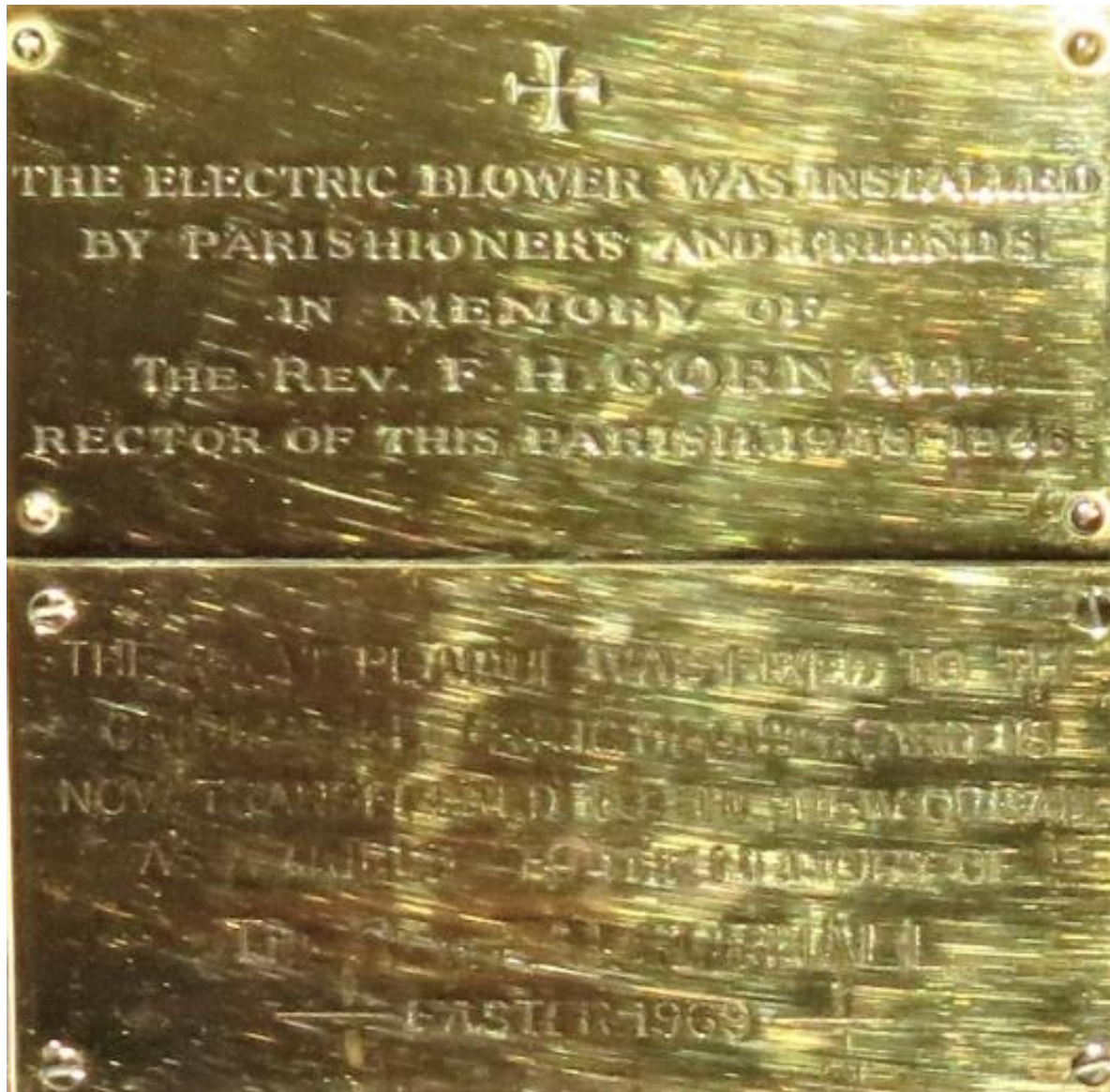
## Back in the nave



The treble bell was added in 1930 to commemorate the appointment of the Rev M R R Green in 1930, as indicated by the plaque to the left of the tower screen.

## Organ

The organ was built by Percy Daniels of Clevedon in 1969. There are two brass plaques on the organ

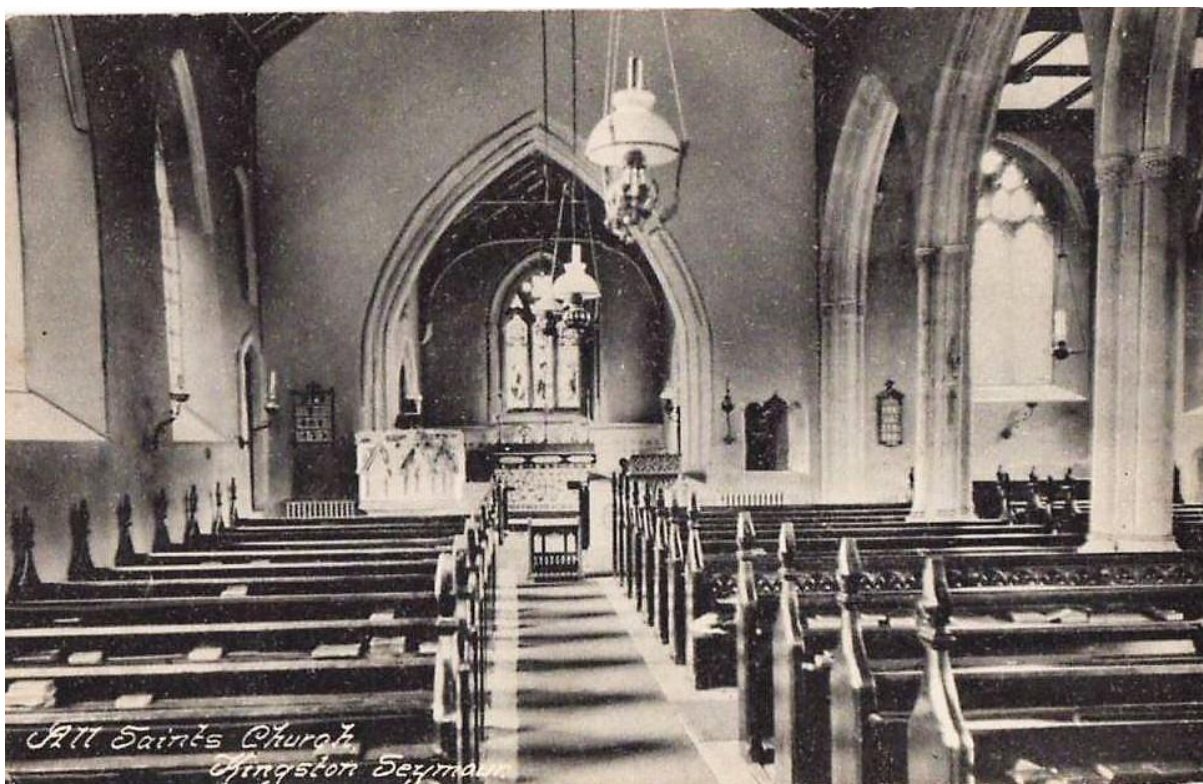


Above: THE ELECTRIC BLOWER WAS INSTALLED BY PARISHIONERS AND FRIENDS IN MEMORY OF THE REV F.H. GORNALL RECTOR OF THIS PARISH 1938-1946

Below: THE ABOVE PLAQUE WAS FIXED TO THE ORIGINAL ELECTRIC BLOWER AND IS NOW TRANSFERRED TO THE NEW ORGAN AS A TRIBUTE TO THEIR MEMORY OF THE REV F.H. GORNALL  
EASTER 1969



Above 2019. Below early 20<sup>th</sup> century. Note the oil lamps in the early picture and that the pulpit has been moved allowing an uninterrupted view of the chancel archway.





Near the organ on the north wall is another plaque to the Rev R R Green. He died in 1934 and in his memory the electric light was installed in the church.

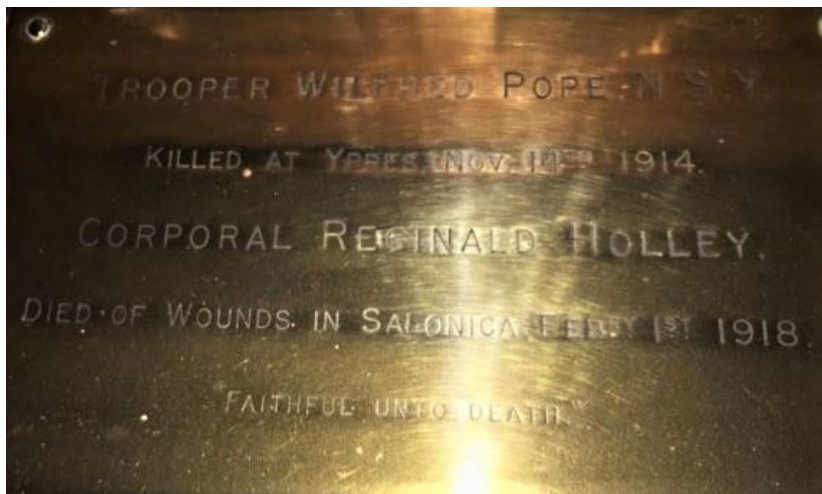


The pulpit was erected in 1865.

In front of it is a chair which has the name Pigott carved into it.



The foot rest on the litany desk in front of the chair has a cushion on it, under which is a brass plaque.



TROOPER WILFRED POPE N S Y  
KILLED AT YPRES NOVEMBER 14<sup>TH</sup>  
1914  
CORPORAL REGINALD HOLLEY  
DIED OF WOUNDS IN SALONICA  
FEBRY 1<sup>ST</sup> 1918  
FAITHFUL UNTO DEATH

Wilfred Pope was in the North Somerset Yeomanry Battalion of the Household Cavalry and Cavalry of the Line Regiment. He was a private, regimental number 773. Wilfred was involved in the Ypres Salient battle, a massacre, and his name is commemorated on the Menin gate at Ypres, which means that his remains were not recovered. He died aged 21.



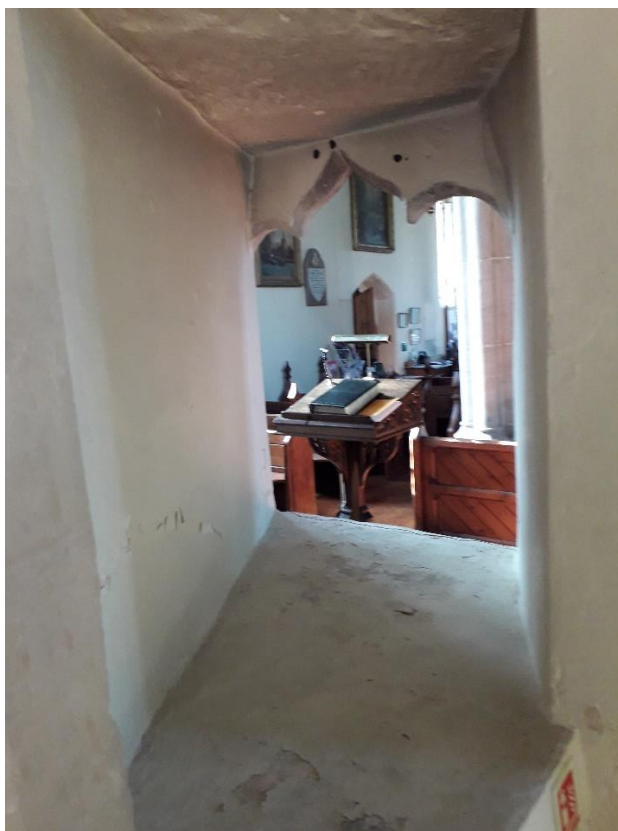
*Wilfred Pope*

Corporal Reginald Holley, 13992, 10 Battalion, Devonshire Regiment, died aged 22 and is buried in Sarigol Military Cemetery, Kriston, Greece,

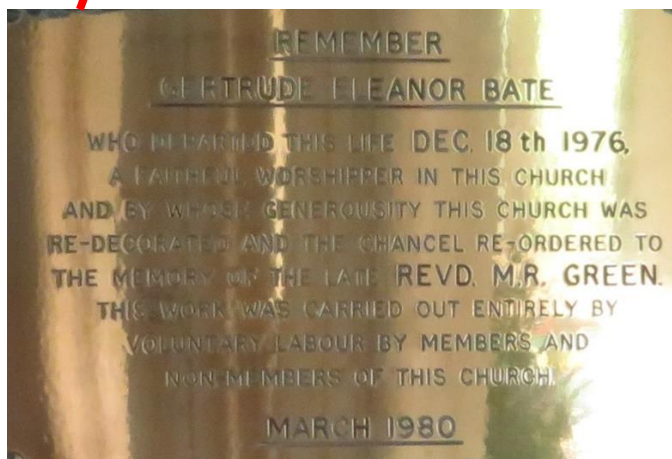
In the north east corner of the nave and to the right of the pulpit is a door leading to an upper doorway which gave access to the rood loft. This was a platform over the entrance to the chancel on which, in pre Reformation times, the rood or crucifix stood. The Churchwardens' Accounts indicate that the rood or chancel screen still remained in 1739.

During the 1980 alterations, when the pulpit was re-sited, the stairway to the rood loft was discovered, also the entrance to a possible medieval sacristy. This archway has now been filled in, leaving just the outline of the arch which can be seen in the north wall on the left-hand side of the pulpit (see photos below).



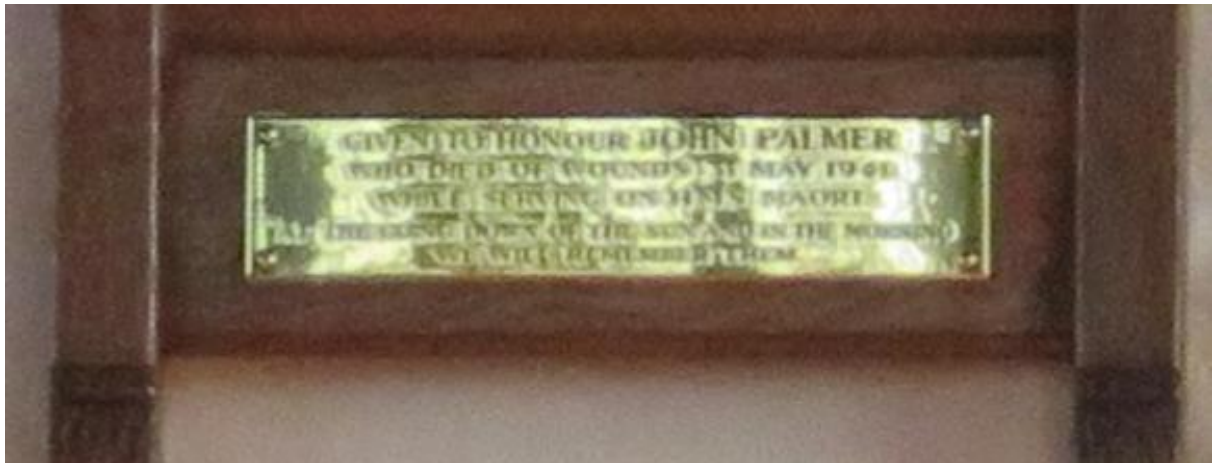


To the right of the chancel arch is a hagioscope or squint which allows some present in the aisle to see the altar and view the elevation of the Host. In Christian liturgy the elevation is a ritual raising of the consecrated elements of bread and wine during the celebration of the Eucharist. The term is applied especially to that by which, in the Roman Rite of Mass, the Host and the Chalice are each shown to the people immediately after each is consecrated. In Roman Catholic and pre-Reformation usage, the elevation of the host was the most sacred part of the mass at which point a bell was rung and the congregation was required to make the sign of the cross.



To the left of the squint is a brass plaque which reads

REMEMBER  
GERTRUDE ELEANOR BATE  
 WHO DEPARTED THIS LIFE DECEMBER 18<sup>TH</sup> 1976  
 A FAITHFUL WORSHIPPER IN THIS CHURCH  
 AND BY WHOSE GENEROSITY THIS CHURCH WAS REDECORATED AND THE CHANCEL  
 RE-ORDERED TO THE MEMORY OF THE LATE REVD. M.R. GREEN.  
 THIS WORK WAS CARRIED OUT ENTIRELY BY VOLUNTARY LABOUR BY MEMBERS AND  
 NON-MEMBERS OF THIS CHURCH  
MARCH 1980



Above it is this hymnal with a brass plaque which reads:

GIVEN TO HONOUR JOHN PALMER  
 WHO DIED OF WOUNDS 31 MAY 1941  
 WHILE SERVING ON HMS MAORI  
 AT THE COMING DOWN OF THE SUN AND IN THE MORNING WE WILL REMEMBER THEM



To the left of the chancel arch is another hymnal.



The inscription reads

TO THE GLORY OF GOD AND IN MEMORY OF  
EDWIN HARTLEY GRIFFIN  
1<sup>ST</sup> SCOUT MASTER  
ENTERED INTO REST FEB 11 1919  
PRESENTED BY THE BOYS  
"BE PREPARED."

## Nave roof bosses



## East



West



A few head bosses. The two top right and middle left look like green men. (Often related to natural vegetative deities. They are primarily interpreted as a symbol of rebirth, representing the cycle of growth each spring).

## The Chancel



The chancel arch may be c14, the double chamfers re-cut in the c15 with ogees (see the awkward bases where the mouldings stop).



An archway to the north chapel, now the vestry, is blocked.  
On the right of the arch is a delicate late Perpendicular (c. 1380–1520) niche with little figures around a vaulted canopy, *ex situ*; the corbelled base and angel over seem c19c.





The east window by Warrington dates to 1865 and was dedicated in memory of Ann Smyth-Pigott who died in 1865.



The trefoil headed piscina in the chancel is, according to Pevsner, c13th century. To its right is a stone priests' seat or sedilia. They needed a seat during the long services.





Supporting the chancel roof are six charming angels

East  
Window



Chancel  
Arch



A closer view of a couple.